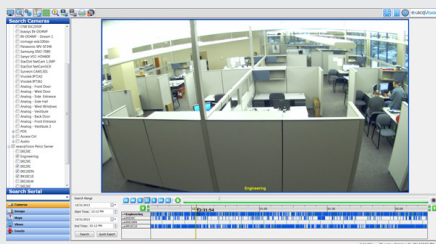
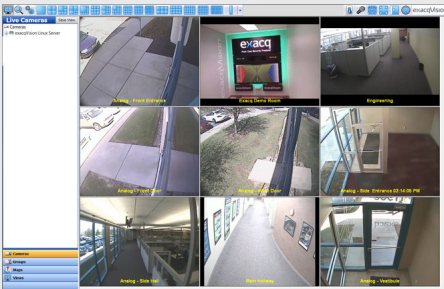
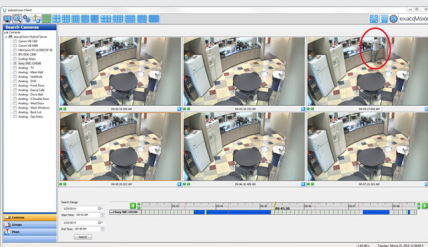


## exacqVision Professional Powerful, Intuitive VMS Software



## EasyConnect



### • **Powerful, Intuitive Video Management System (VMS) Features**

- Effectively monitor video, audio and data in real time
  - Two-way audio
  - Interactive mapping
  - Data integration from retail and access control systems
  - Notification overlays
- Reduce review time and conduct investigations seamlessly
  - Powerful thumbnail and timeline search capabilities
  - Export video in open-standard video format
  - Or export as a self-contained player with tamper protection

### • **Constantly Expanding Functionality with Included Software Updates**

- Get more video management features without replacing your entire VMS
- Includes 1 year free software updates (three years on exacqVision NVRs)

### • **Ease of Use & Flexibility**

- Requires little to no training
- Software installs in minutes
- EasyConnect automatically finds, assigns and addresses compatible IP cameras
- Easily add IP camera licenses at any time
- Per camera server licensing with no base server fee

### • **Flexible Deployment**

- exacqVision Professional VMS software comes pre-configured and pre-installed on exacqVision out-of-the-box network video recorders
- Installs on third-party servers

### • **View Video Anywhere with Free Client Software**

- Select the interface that works best for you
- Access live and recorded video on Windows, Linux or Mac PCs
- Use the free web service application in any modern browser
- Download the free Exacq Mobile app available for iOS, Android, Windows Phone 8

### • **Highly Scalable**

- Single client connects to thousands of servers
- Allows you to connect up to 64 analog and 128 IP cameras on exacqVision hybrid servers
- Offers high video throughput with minimal CPU and RAM requirements necessary

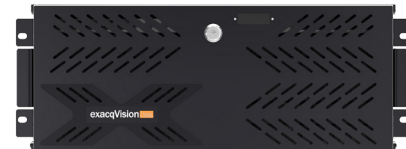
### • **Build a Best-of-Breed Physical Security System**

- Integrates with:
  - Over 2,000 IP cameras and encoders from more than 60 manufacturers
  - 20 access control systems
  - Video analytics solutions for license plate recognition, heat mapping and intrusion detection
  - Retail/Point-of-sale analytics

CLIENT WORKSTATION HARDWARE MINIMUM REQUIREMENTS		TYPICALLY USED FOR VIEWING 1-4 ANALOG CAMERAS
Processor		Intel® Celeron® G540 or higher
RAM		1 GB
Hard Drive		40 GB
Video		Intel HD (on-CPU GPU)
Operating Systems		Microsoft® Windows XP, Apple Macintosh OSX 10.6, Linux Ubuntu 8.04 or higher
VMS SERVER HARDWARE MINIMUM REQUIREMENTS		TYPICALLY LESS THAN 50 MPBS CAMERA TRAFFIC, 1-2 SIMULTANEOUS REMOTE CLIENTS
Processor		Intel® Atom D525 1.8GHz or higher
RAM		2 GB
Hard Drive		60 GB (OS) + 250 GB (video) > 15 Mbps non-sequential write
Operating System		Microsoft® Windows 7 Pro, Microsoft® Server 2003, Linux Ubuntu 10.04 or higher
NIC		1 Gbps
WEB BROWSER ACCESS		
Compatibility		Internet Explorer, Firefox, Safari, Opera, Chrome
MOBILE DEVICE ACCESS		
Compatibility		iOS, Android, Windows Phone 8

exacqVision Professional VMS Software  
is available on exacqVision servers:

exacqVision **Z-Series**



exacqVision **A-Series**



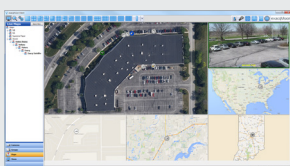
exacqVision **ELP**



exacqVision **LC-Series**



## Related Products



exacqVision Enterprise  
VMS Software



exacqVision Hybrid &  
IP Camera Servers

[www.exacq.com](http://www.exacq.com)